



Dull Olson Weekes - IBI Group Architects, Inc.
 907 SW Stark Street
 Portland OR 97205 USA
 tel 503 226 6950
 fax 503 273 9192



Meeting Notes

From Steve Olson **Date** September 11, 2013
Project Franklin HS Modernization **Project No.** 13-023
Subject Design Advisory Group (DAG) #5
 Franklin HS Library
 September 11, 2013 5:00 – 7:00 PM

INVITEES

(Attendees in Bold)

Project Team

Debbie Pearson, PPS OSM
CJ Sylvester, PPS OSM
 Jim Owens, PPS OSM
Rolando Aquilizan, PPS OSM
Jenn Sohm, PPS OSM
David Mayne, PPS Communications
Kimm Fox-Middleton, PPS Communications
 Karina Ruiz, DOWA-IBI Group
Steve Olson, DOWA-IBI Group
 Marc Nordean, DOWA-IBI Group
 Tonie Esteban, DOWA-IBI Group
 Alene Davis, SERA
 Clark Brockman, SERA
Stuart Colby, SERA
Craig Rice, SERA
Shay James, FHS Principal
 Marshall Haskins, FHS Vice Principal
 Ivonne Diblee, FHS Vice Principal
 Dennis Joule, FHS Vice Principal
Steve Mathews, FHS Business Manager

Design Advisory Group (DAG)

Greg Belisle, School Board Representative
 Leigh Brown, SPED Representative
Maria Carlsen, Student Representative
Joyce Gago, Community Representative
 Jeff Hammond, Neighbor & Local Business Rep
Roger Kirchner, Parent Representative
 Pam Knuth, FHS Alumni President
Heidi Leineweber, Teacher Representative
Amber McGill, SUN School Representative
Dana Vinger, Teacher Representative
Lisa Zuniga, Parent Representative

 Tom Peterson, Bond Accountability Comm

 4 Members of the Public

SUMMARY

The following is a brief summary of the discussions that took place at this meeting. Action items will be specifically noted.

- I. Historic Resource Discussion
 - Stuart Colby and Craig Rice led a presentation and discussion about the Franklin HS as a Historic Resource.
 - Entrex performed surveys of all PPS Historic Schools in 2009. Franklin site was included in the survey. The original 1915 Building, the Boiler Building, the Auditorium Building and the 1950 Field



House are all identified as Contributing High Significance. The 1916 Classroom Building is identified as Contributing Moderate Significance. The remaining buildings are identified as non-contributing.

- The Building is eligible, but is not listed nor has it been nominated for listing on the National Register.
 - A Preservation Plan for modifications will be created based upon input from Community and District needs and priorities. The plan will be discussed and coordinated with State Historic Preservation Office (SHPO) to reach agreement.
 - Individual components of Historic Significance were discussed.
 - i. The strong classic site and floor plan layout suggests an important place of learning.
 - ii. The prominent central north main entry.
 - iii. The prominent central south secondary entry.
 - iv. The prominent Auditorium entry that is now obscured by the gym and parking lot.
 - v. The Boiler Building.
 - vi. The interior entry lobby and stair.
 - vii. The Auditorium
 - viii. The original gymnasium (later remodeled into classrooms)
 - ix. The strong bilateral east / west corridor in the main building.
 - It was noted that the later building additions on the south side of the original structure are not in keeping with intent of the original master and partially obscure the historic structure while creating site use issues.
 - Images were then shown of a number of transformations both exterior and interior of similar historic buildings as reference for the possible design approaches that could be undertaken.
 - The Group then participated in a discussion of the value of existing historic exterior and interior elements. Items of significance that the group believed need to be preserved include:
 - i. Boiler Building with the option of repurposing. It was noted that this building may not be located optimally for future expansion and good use of the site.
 - ii. The original main 1915 building with the east and west wings. Maintain the original "H" plan. Maintain exterior appearance.
 - iii. Auditorium. Historic elements are important. Repurposing the existing space may be an option if the existing layout does not accommodate the needs of the new Comprehensive High School program for Performing Arts. Some expressed a concern that a gathering space for the entire student body should be planned in new school if the existing Auditorium is converted to a different use.
 - iv. Cupola should be kept.
 - v. Front lawn area needs to be maintained as an outdoor plaza space.
 - vi. South Entry. The existing drive should be eliminated and the area be made more pedestrian friendly. Landscaping is important, but the area needs to be cleaned up. The current existing landscaping does not need to be maintained.
 - vii. South Auditorium Entry. Maintain, but could be repurposed and made more prominent.
 - viii. Entry Lobby. Needs to be maintained, but many would like to see it be have more height and openness. The Stair is too narrow to be functional.
 - The following components were seen of lesser value and could be removed or remodeled depending upon the new master plan ideas:
 - i. The later 1950's and 1980's buildings.
 - ii. Cafeteria could be remodeled. Not historically significant.
 - iii. Interior corridor system. The group did not see its significance, however Craig pointed out that maintaining the strong east / west circulation plan may be important in the Preservation Plan.
- II. Site Planning Exercise.
- The group broke up into three table groups to analyze existing site issues. Each group worked with one of the Architects to sketch possible ideas around maintaining existing site a building

features and how the plan layout could be improved through the development of a new master plan.

- The following was noted:
 - i. Students feel the 52nd street corner is the main entry to the campus. A new front entry could be developed here.
 - ii. Pedestrian access from the north west and north east (Division St.) is limited by fencing around the athletic field area.
 - iii. Access to parking is poor. Suggest creating new driveway entry to the west parking lot off 52nd street north of the Woodward intersection.
 - iv. Access from south to north through and around building is poor.
 - v. The north plaza is a very nice space and should be maintained and possibly enhanced. The idea of creating usable space under the plaza while maintaining the existing historical character of the building is desirable. Consider locating athletic complex here.
 - vi. Improve access from the cafeteria (if it stays in existing location) to the north plaza area.
 - vii. Access to fields is limited.
 - viii. A modern consolidated athletic facility is desired.
 - ix. Cafeteria could be relocate to a more prominent location and made into a commons space.
 - x. The possibility of access through the building from south to north underground (per examples shown in presentation) is desirable.
 - xi. Breezeways between the main building and west and east classroom wings is desirable to provide better north south exterior access. This could pose security issues.
 - xii. A common gathering area on the south (Woodward St.) is desirable. Improved drop-off area in this location is desired.
 - xiii. Consider locating the new Theater building at the Woodward & 52nd Street corner as a new entry focal point.
 - xiv. Consider the possibility of enclosing the south courtyard with a glass structure.
 - xv. Study and consider pedestrian, automobile and bus traffic and circulation in the new plan. Site currently has a number of shortcomings as it has been developed and uses have changed over time.

III. Future Topic Review

- At the next meeting, the design charrette, time will be devoted to site plan review and use. The attendees will have the opportunity to work with the architectural team to look at alternative site layouts and uses.

IV. DAG Schedule

- The community charrettes remain on September 21st and October 12th, 9:00 am to 12:00 pm.
- Regular DAG Meetings are scheduled for October 2nd and 22nd from 5:00 pm to 7:00 pm. (Note new time)

V. Rumor Control

- None addressed.

These meeting notes are a record. If there are any errors and/or omissions in the foregoing notes, please advise our office immediately; otherwise these notes will be considered correct and complete as written.

Submitted by,
Dull Olson Weekes – IBI Group Architects Inc.

Steve Olson AIA
Principal

Attachments:

<u>Item:</u>	<u>Pages:</u>	<u>Date:</u>
DAG #5 Agenda	1	9/11/13
Presentation	55	9/11/13
DAG Site Options	5	9/11/13



Franklin Design Advisory Committee (DAG) MEETING #5 AGENDA

FACILITATOR: Steve Olson, DOWA-IBI Group
MEETING DATE: September 11, 2013
RECORD TAKEN BY: Steve Olson, DOWA-IBI Group

MEETING #: 5
LOCATION: Franklin HS – Conference Room 142
DURATION: 5:30 - 7:30 PM

AGENDA

5:30 PM

Introductions

- Name
- Affiliation

5:35 PM

Historic Resource Discussion

- Historic review process summary
- Review of 1915 Master Plan intent and vision
- Review of Key Characteristics of historic elements
- Discussion of value of existing historic exterior and interior elements

6:45 PM

Review of Site Opportunities

7:15 PM

DAG Schedule (Stakeholder Engagement Schedule)

- Future Meeting info (5:30 – 7:30 p.m. Media Center U.N.O.)
October 2nd, Oct. 22nd, Oct. 29th
- Future Charette dates (9:00 a.m. – 12:00 p.m. Media Center U.N.O.)
September 21st, October 12th

7:20 PM

Rumor Control

7:25 PM

Public Comments

NOTES

- Meeting record will be posted on the Franklin High School bond website at: <http://www.pps.k12.or.us/bond/8495.htm>

Historic Design Overview



Franklin HS Modernization
Dull Olson Weekes - IBI Group Architects
September 11, 2013

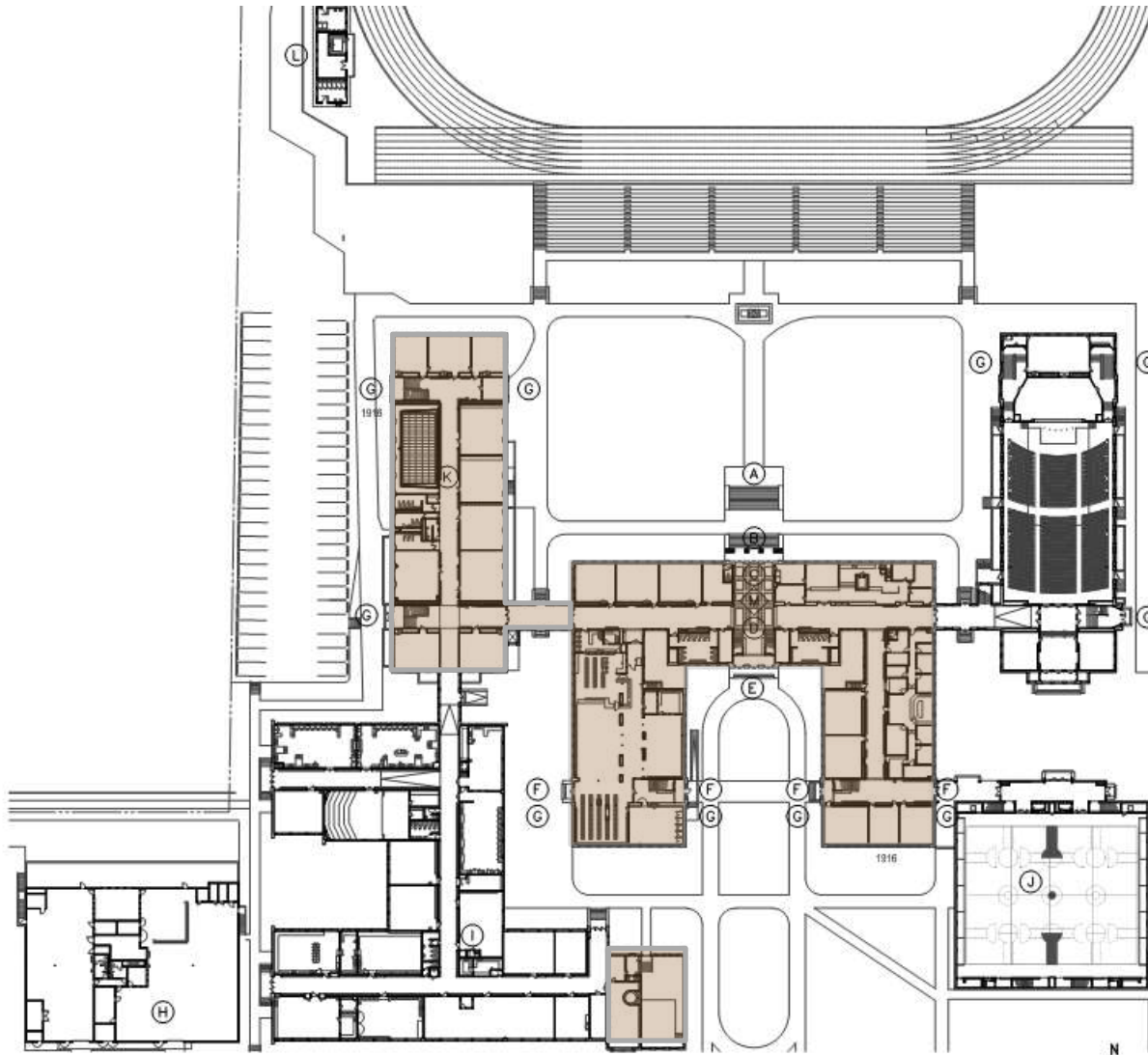
- PPS 2009 Surveys
- Building is Eligible for Listing on the National Register...
- But not Nominated or Listed
- Meet Secretary of the Interior Standards for Rehabilitation (National Park Service)
- Create a Preservation Plan
- Review proposed modifications / new work with State Historic Preservation Office (ORS 378)
- Assess Effects
- Finalize Agreement with SHPO (clearance letter)



Dull Olson Weekes – IBI Group Architects
Portland Public Schools – Franklin HS Modernization

21st Century Learning in an Historic Building
September 11, 2013



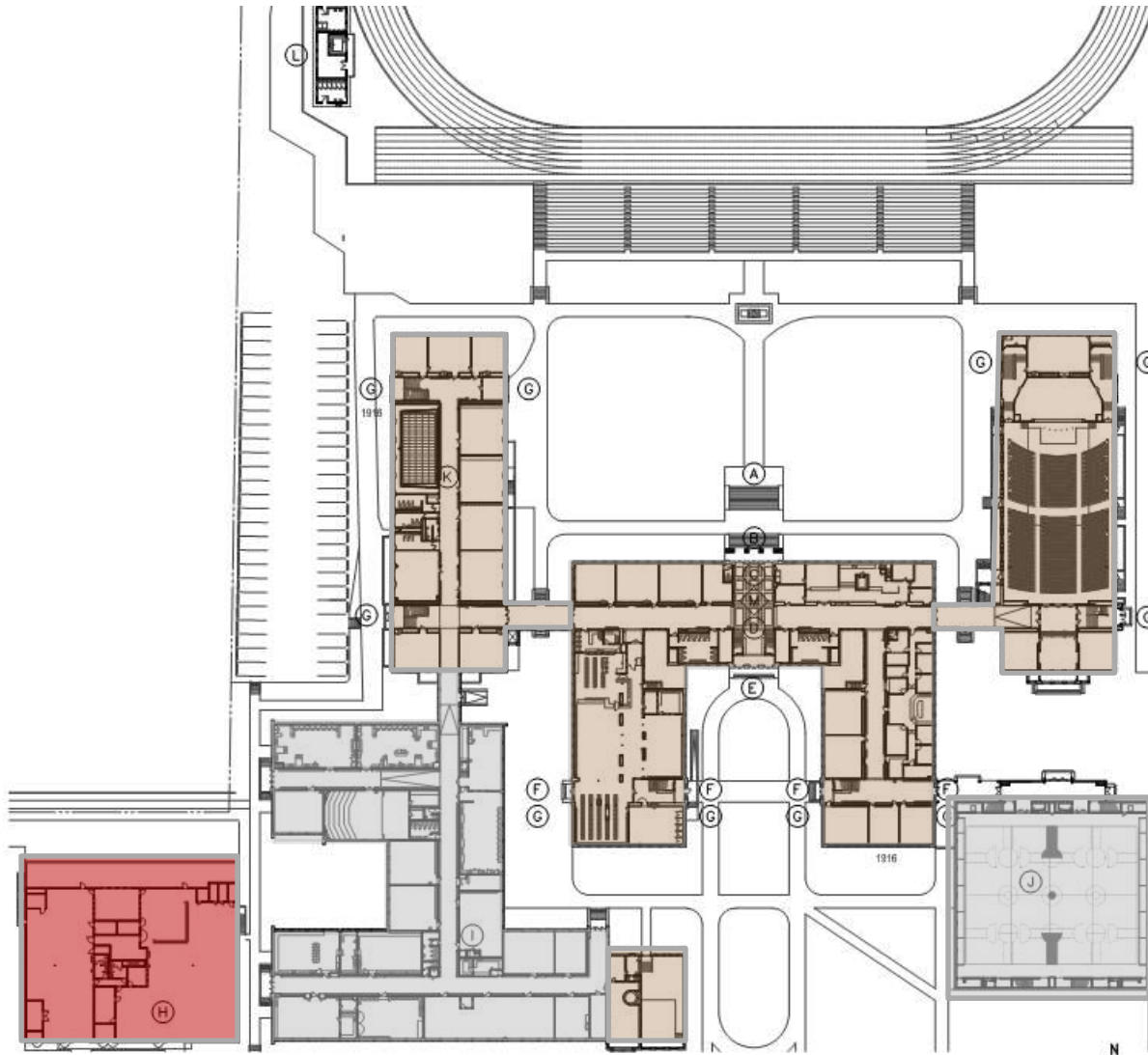


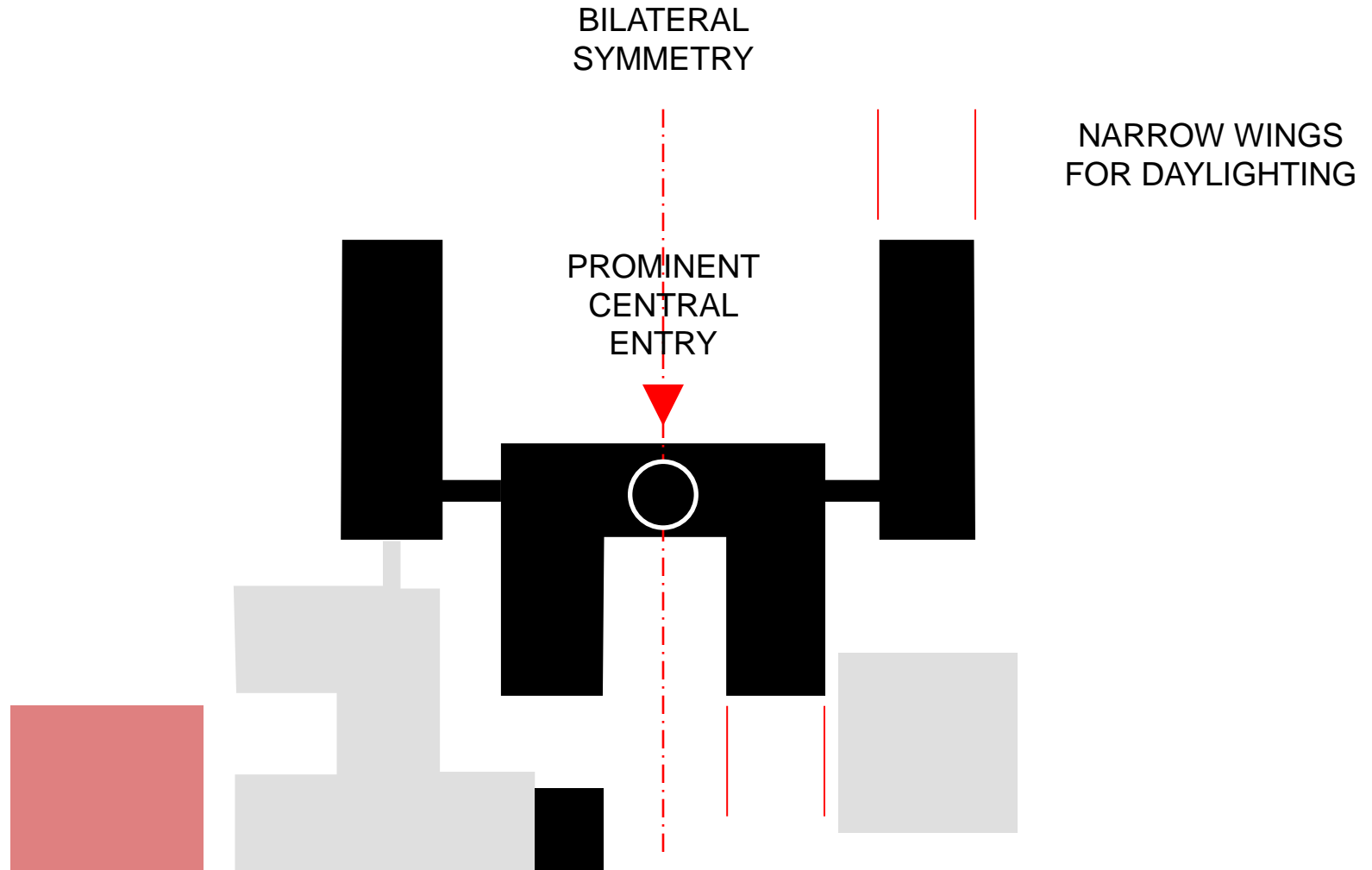


Dull Olson Weekes – IBI Group Architects
Portland Public Schools – Franklin HS Modernization

21st Century Learning in an Historic Building
September 11, 2013







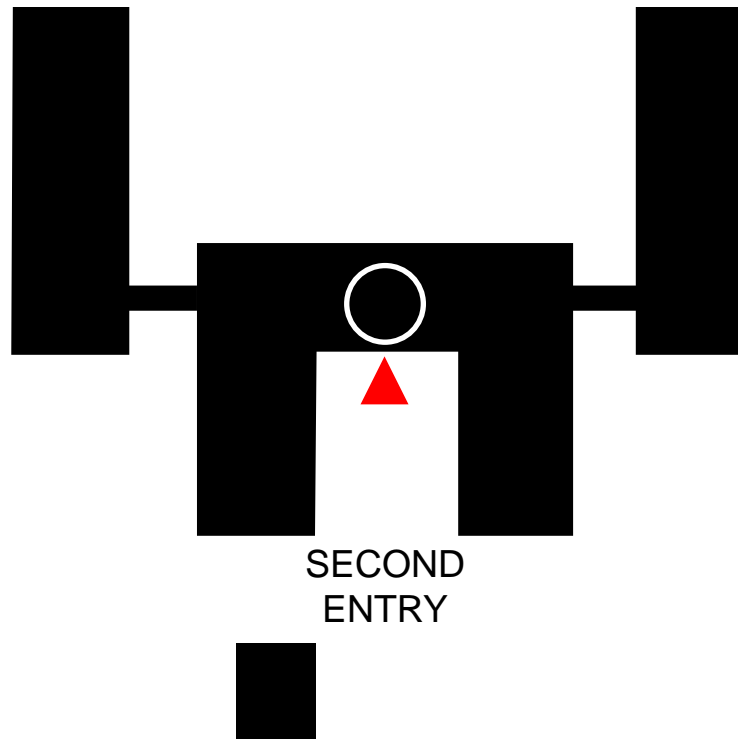
Franklin HS Campus // Division Street Entry



Dull Olson Weekes – IBI Group Architects
Portland Public Schools – Franklin HS Modernization

21st Century Learning in an Historic Building
September 11, 2013





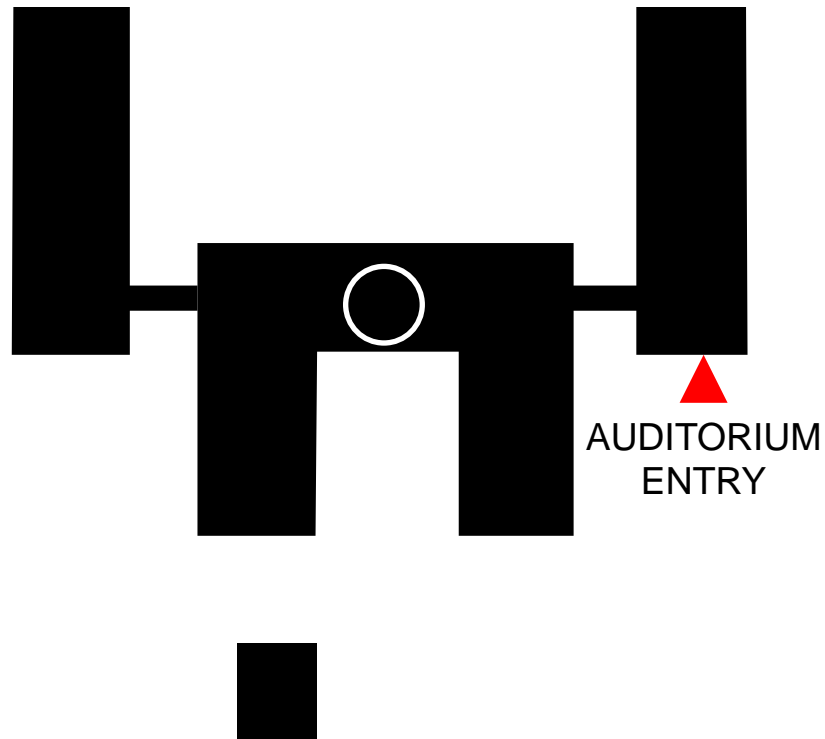
Franklin HS Campus // Woodward Street Entry



Dull Olson Weekes – IBI Group Architects
Portland Public Schools – Franklin HS Modernization

21st Century Learning in an Historic Building
September 11, 2013





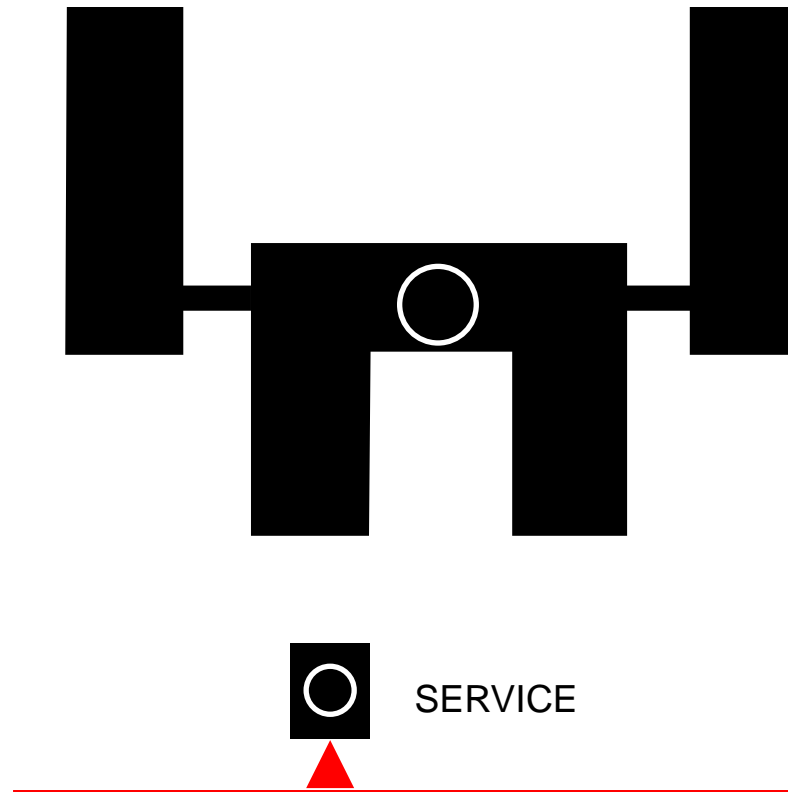
Franklin HS Campus // Auditorium Entry



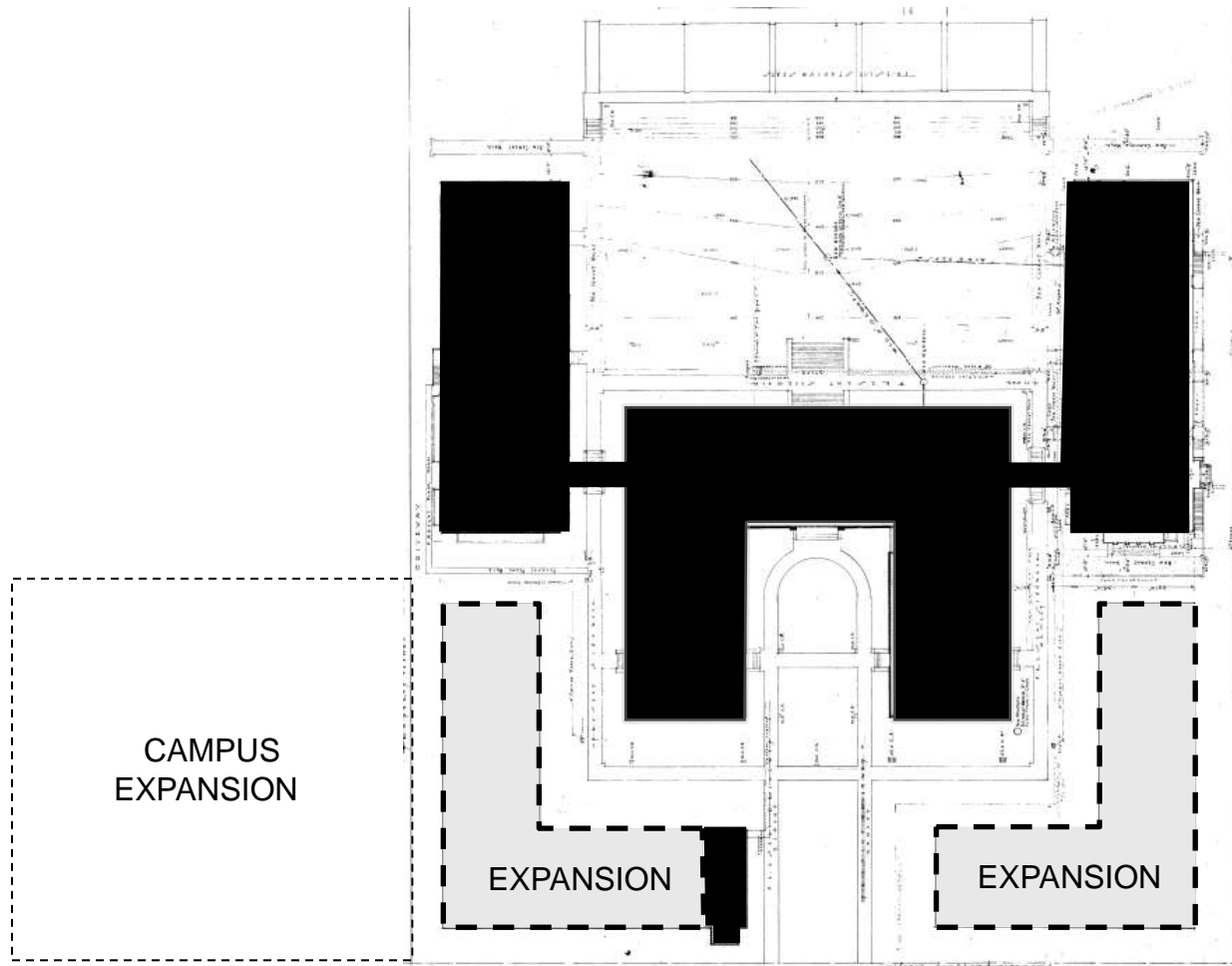
Dull Olson Weekes – IBI Group Architects
Portland Public Schools – Franklin HS Modernization

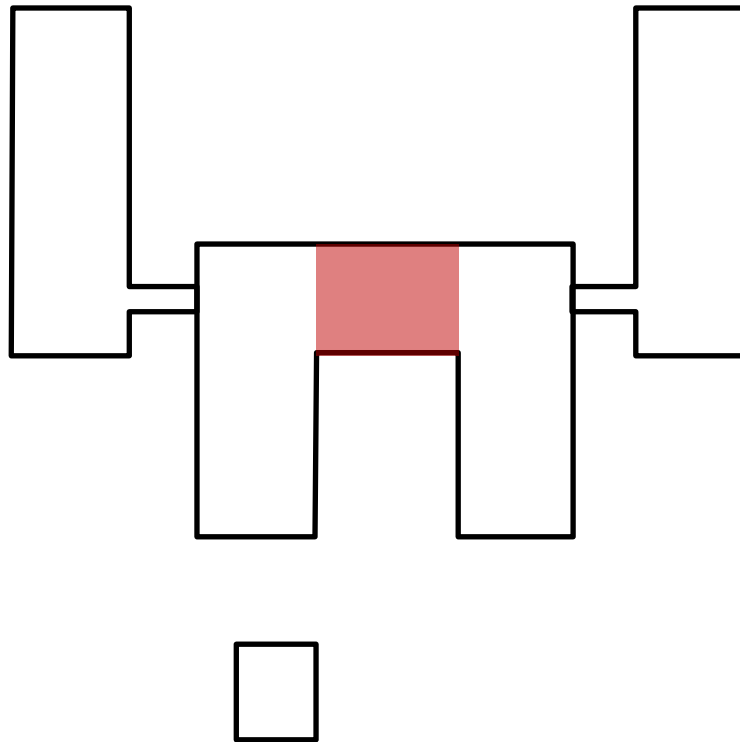
21st Century Learning in an Historic Building
September 11, 2013





Franklin HS Campus // Original Site Plan





Franklin HS Interior // Entry and Stair



Franklin HS Interior // Entry and Stair



Franklin HS Interior // Entry and Stair



Dull Olson Weekes – IBI Group Architects
Portland Public Schools – Franklin HS Modernization

21st Century Learning in an Historic Building
September 11, 2013



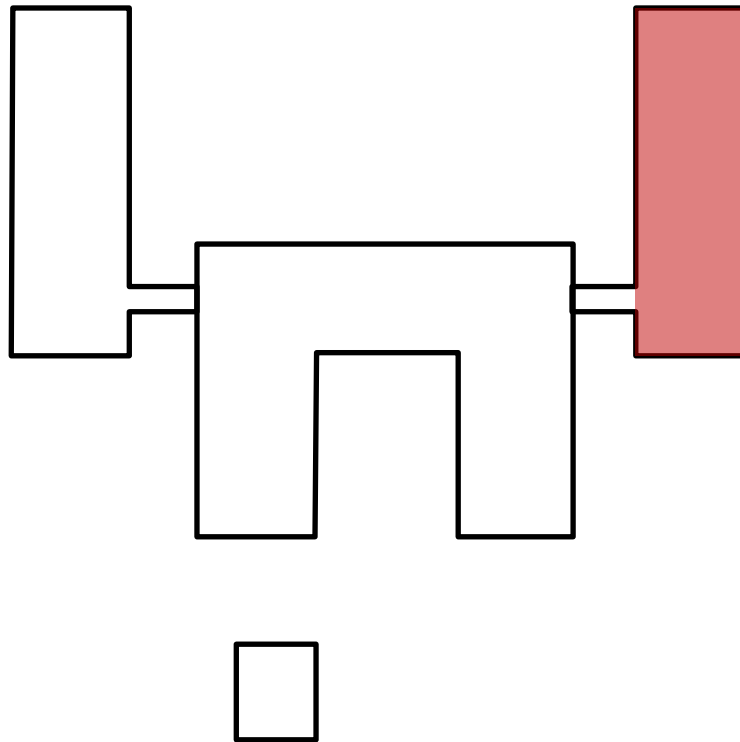
Franklin HS Interior // Entry and Stair



Dull Olson Weekes – IBI Group Architects
Portland Public Schools – Franklin HS Modernization

21st Century Learning in an Historic Building
September 11, 2013







Franklin HS Interior // Auditorium



Dull Olson Weekes – IBI Group Architects
Portland Public Schools – Franklin HS Modernization

21st Century Learning in an Historic Building
September 11, 2013





Franklin HS Interior // Cafeteria



Dull Olson Weekes – IBI Group Architects
Portland Public Schools – Franklin HS Modernization

21st Century Learning in an Historic Building
September 11, 2013

SERA

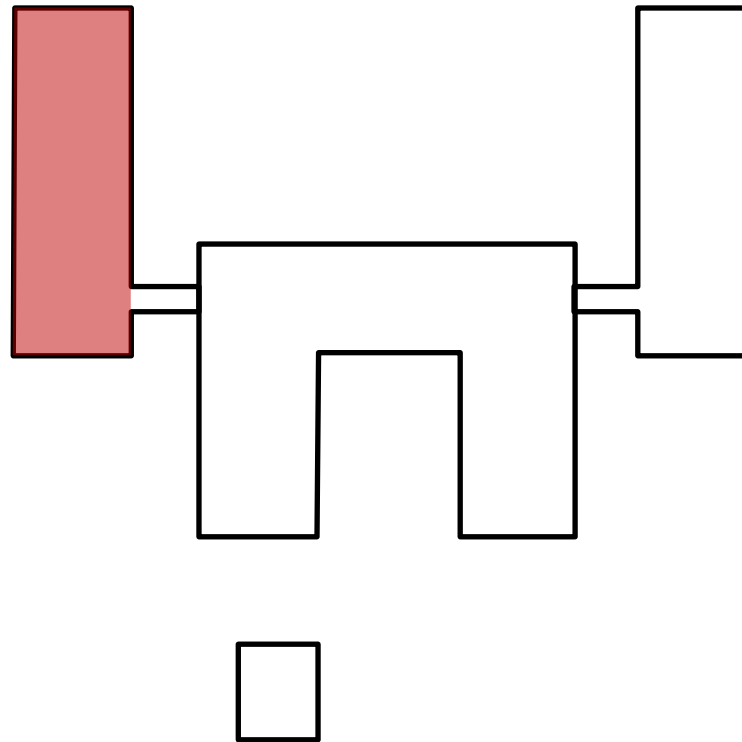
Franklin HS Interior // Cafeteria



Dull Olson Weekes – IBI Group Architects
Portland Public Schools – Franklin HS Modernization

21st Century Learning in an Historic Building
September 11, 2013





Franklin HS Interior // Former Gymnasium



Dull Olson Weekes – IBI Group Architects
Portland Public Schools – Franklin HS Modernization

21st Century Learning in an Historic Building
September 11, 2013



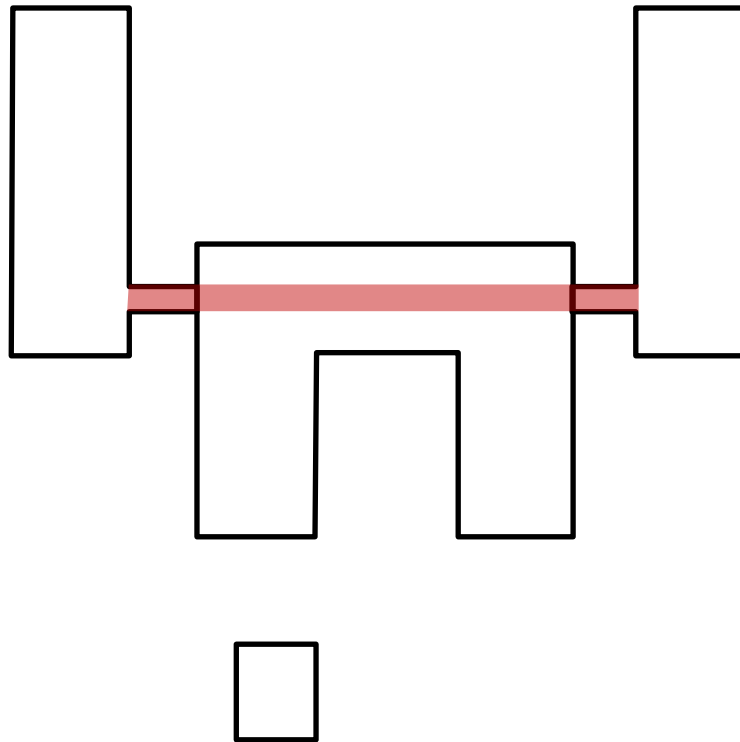
Franklin HS Interior // Former Gymnasium



Dull Olson Weekes – IBI Group Architects
Portland Public Schools – Franklin HS Modernization

21st Century Learning in an Historic Building
September 11, 2013





Franklin HS Interior // Corridors



Dull Olson Weekes – IBI Group Architects
Portland Public Schools – Franklin HS Modernization

21st Century Learning in an Historic Building
September 11, 2013



Franklin HS Interior // Corridors



Dull Olson Weekes – IBI Group Architects
Portland Public Schools – Franklin HS Modernization

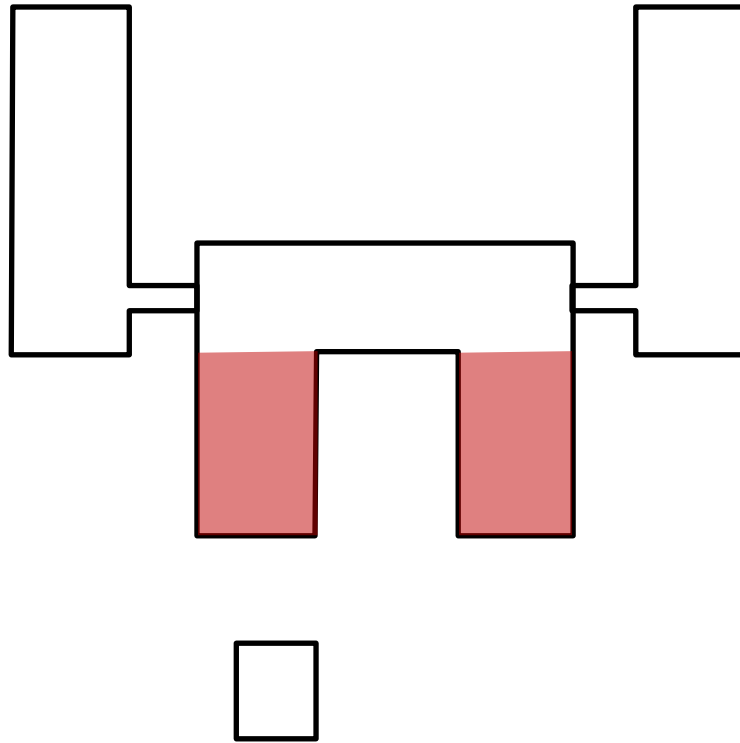
21st Century Learning in an Historic Building
September 11, 2013



Franklin HS Interior // Entry and Stair







Franklin HS Interior // Corridors



Dull Olson Weekes – IBI Group Architects
Portland Public Schools – Franklin HS Modernization

21st Century Learning in an Historic Building
September 11, 2013





How Would You Prioritize the Preservation of Franklin's Existing Buildings and Interior Spaces?

- Original Building
- West Wing
- East Wing
- Boiler Building

- 1951 Classroom Building
- 1954 Gymnasium
- 1980s Shop Building

- Entry
- Auditorium
- Cafeteria
- Corridors
- Restrooms
- Library Wing



Case Study // Louvre Museum



Dull Olson Weekes – IBI Group Architects
Portland Public Schools – Franklin HS Modernization

21st Century Learning in an Historic Building
September 11, 2013

SERA

Case Study // Library, University of Illinois



Dull Olson Weekes – IBI Group Architects
Portland Public Schools – Franklin HS Modernization

21st Century Learning in an Historic Building
September 11, 2013

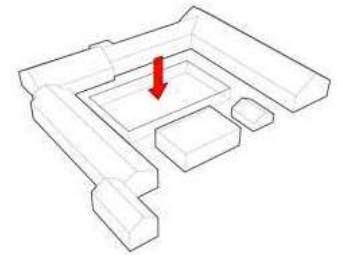
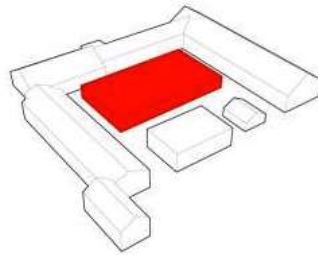
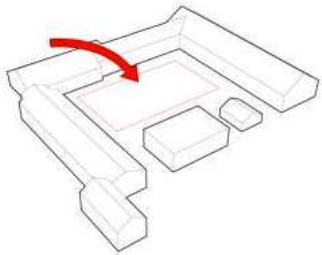
SERA

Case Study // Library, University of Delft





Case Study // Gammel Hellerup Gymnasium



Dull Olson Weekes – IBI Group Architects
Portland Public Schools – Franklin HS Modernization

21st Century Learning in an Historic Building
September 11, 2013



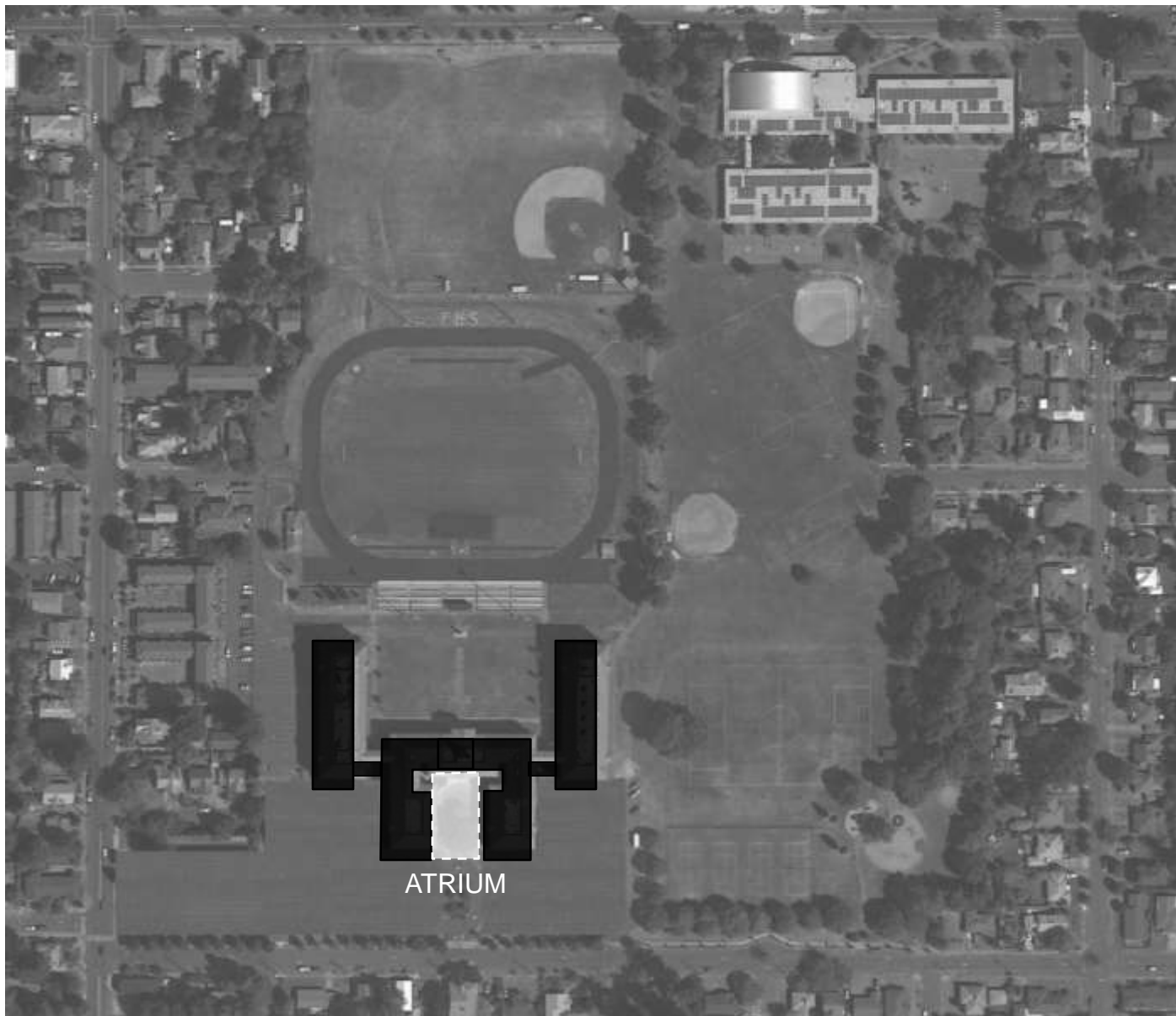
Case Study // Gammel Hellerup Gymnasium



Dull Olson Weekes – IBI Group Architects
Portland Public Schools – Franklin HS Modernization

21st Century Learning in an Historic Building
September 11, 2013





Case Study // Het Scheepvaar Museum



Dull Olson Weekes – IBI Group Architects
Portland Public Schools – Franklin HS Modernization

21st Century Learning in an Historic Building
September 11, 2013



Case Study // National Portrait Gallery, Washington DC



Dull Olson Weekes – IBI Group Architects
Portland Public Schools – Franklin HS Modernization

21st Century Learning in an Historic Building
September 11, 2013

SERA

Case Study: Het Scheepvaar Museum

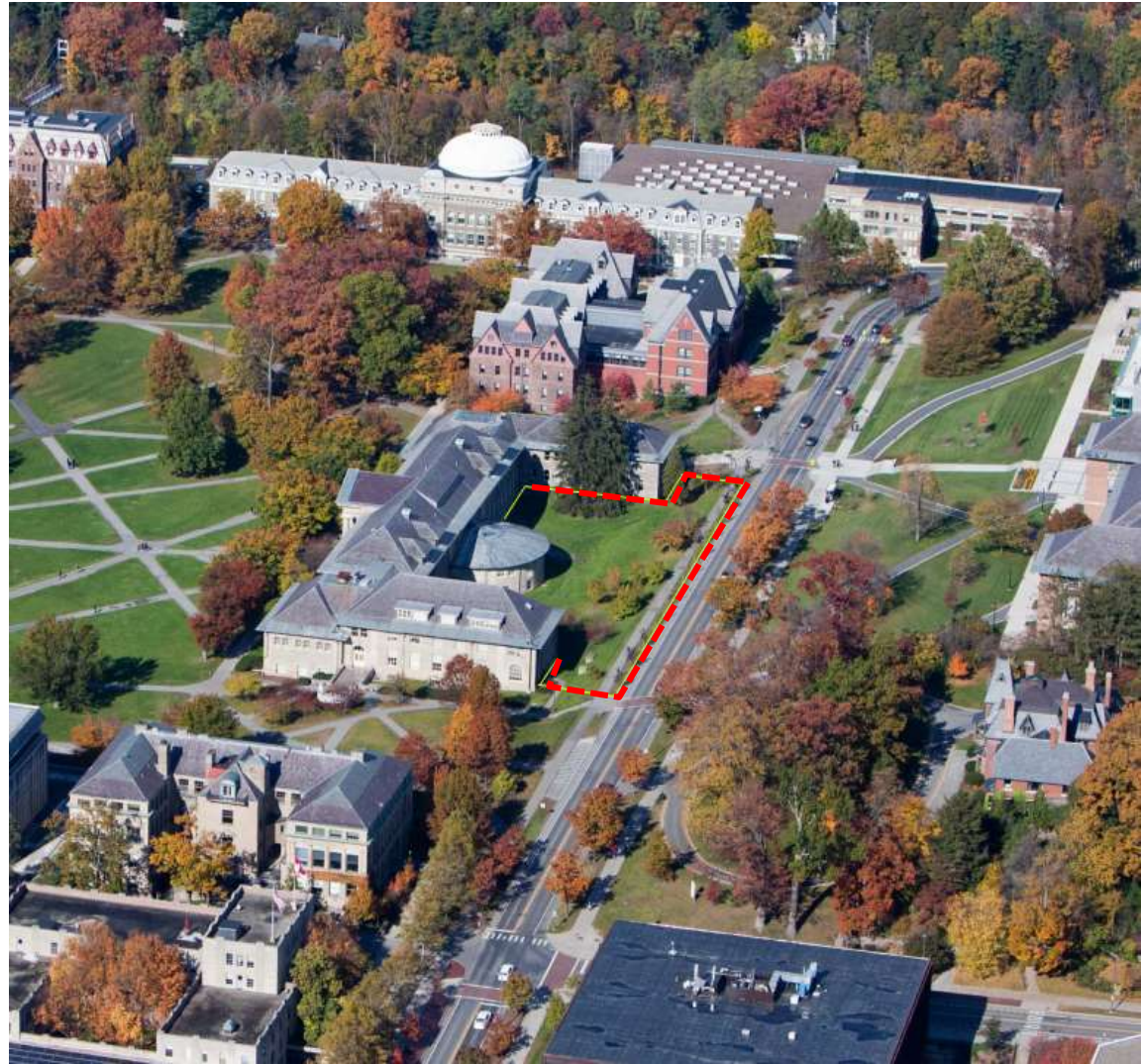
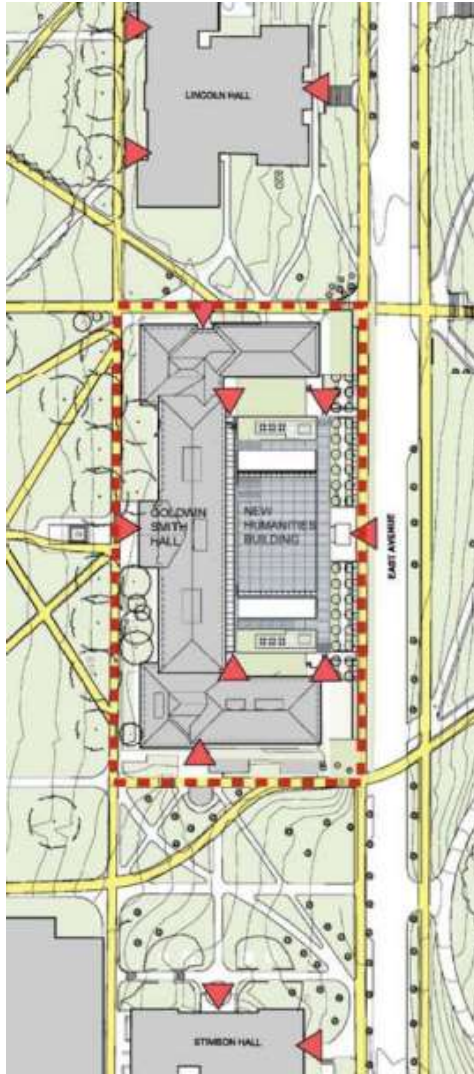


Dull Olson Weekes – IBI Group Architects
Portland Public Schools – Franklin HS Modernization

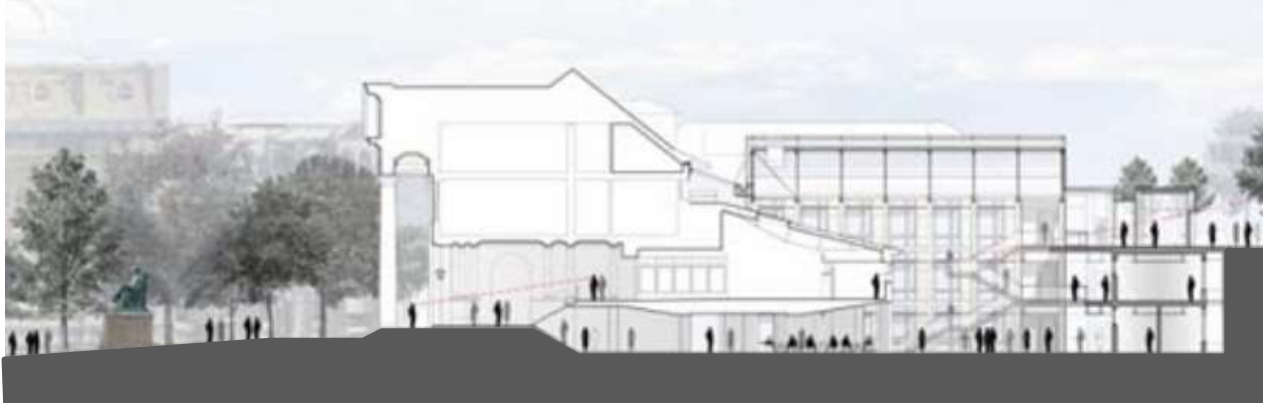
21st Century Learning in an Historic Building
September 11, 2013



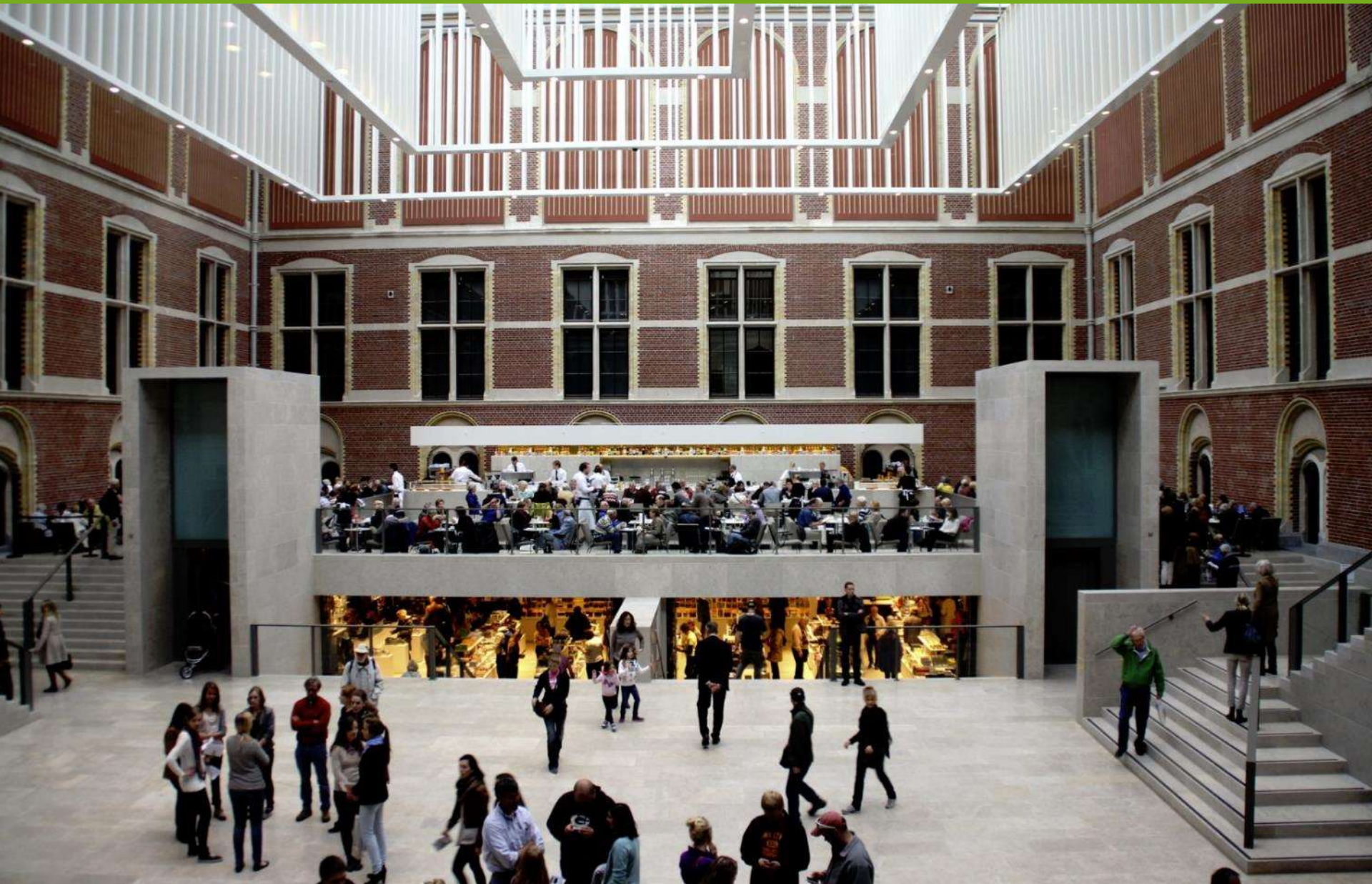
Case Study: Klarman Hall – Cornell University



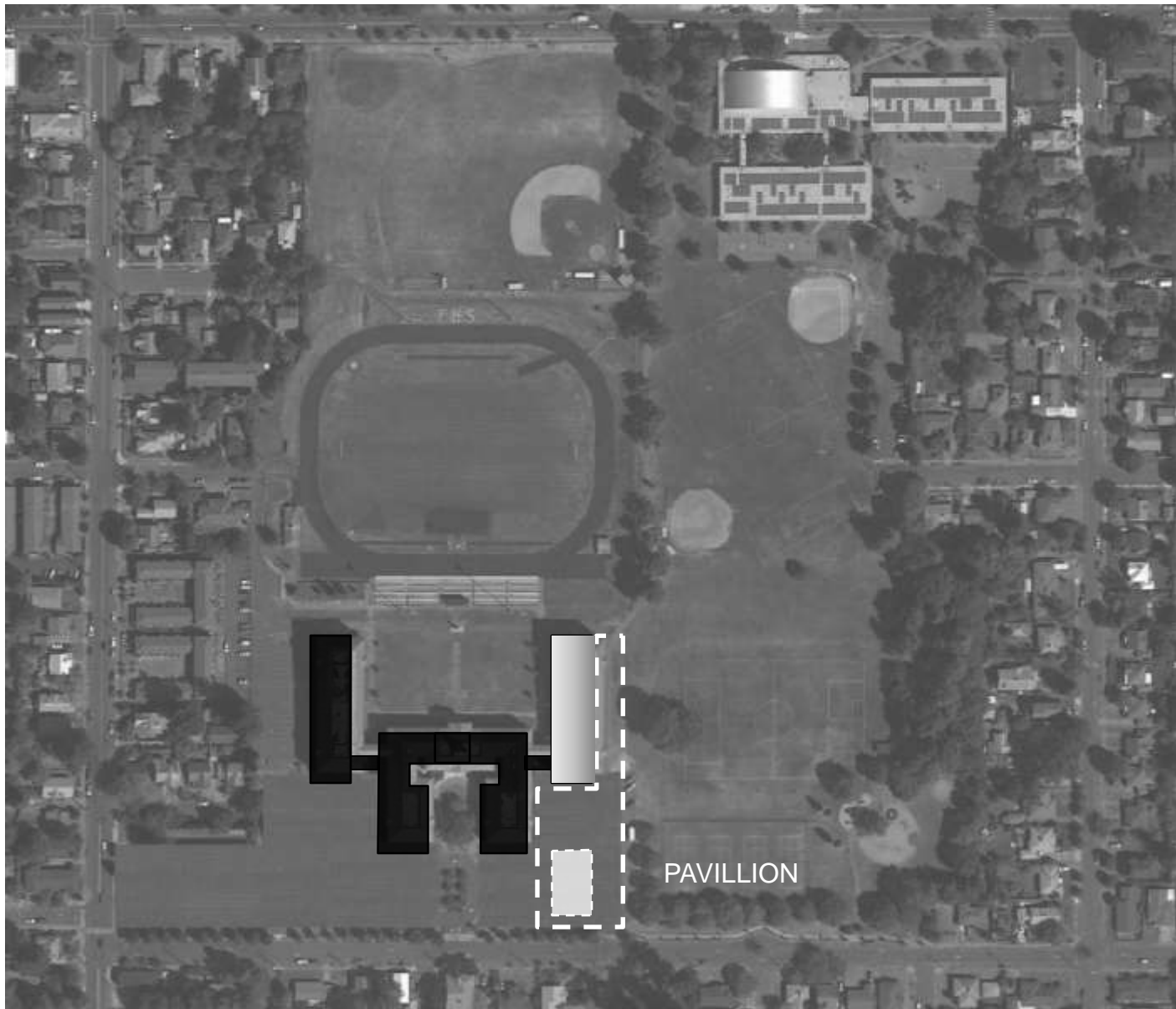
Case Study: Klarman Hall – Cornell University



Case Study: Het Scheepvaar Museum



Franklin HS Campus // Pavillion Precedents



Dull Olson Weekes – IBI Group Architects
Portland Public Schools – Franklin HS Modernization

21st Century Learning in an Historic Building
September 11, 2013



Case Study: Apple Store, Fifth Avenue, NYC



Case Study: Apple Store, Fifth Avenue, NYC



Dull Olson Weekes – IBI Group Architects
Portland Public Schools – Franklin HS Modernization

21st Century Learning in an Historic Building
September 11, 2013



Case Study // Library, Sydney Australia

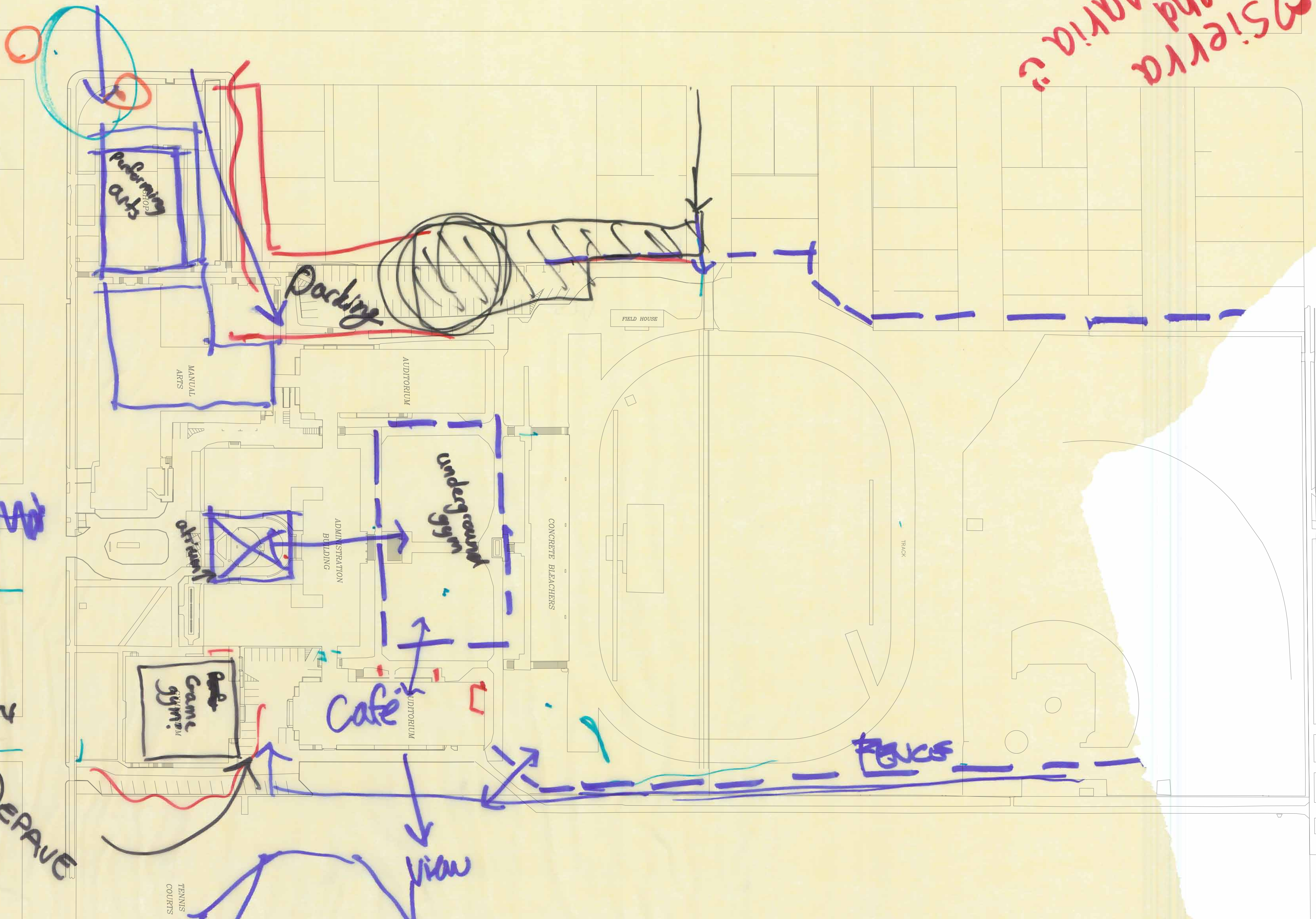


Dull Olson Weekes – IBI Group Architects
Portland Public Schools – Franklin HS Modernization

21st Century Learning in an Historic Building
September 11, 2013



Sierra and Maria



MORE PEDESTRIAN CONNECTIVITY
LESS CAR

DEPAVE

Cafe

view

Focus

SHOP

MANUAL ARTS

AUDITORIUM

ADMINISTRATION BUILDING

CONCRETE BLEACHERS

FIELD HOUSE

TRACK

TENNIS COURTS

Wooden

gym

gym

gym

highlights windows

ACCESS FROM FOOTBALL

EMERGENCY EXPRESS IS IMPORTANT

GYM FOR DANCE

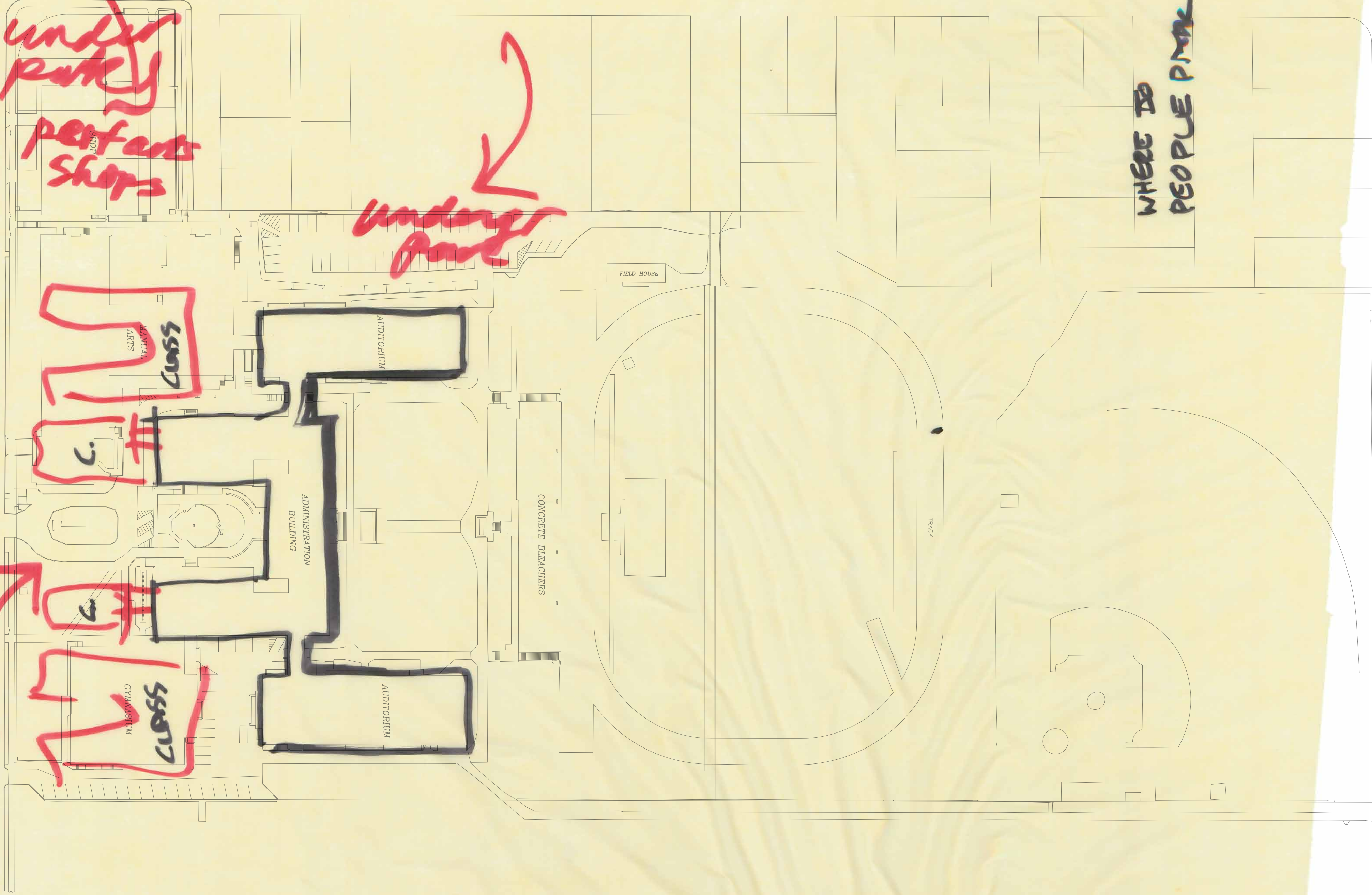
3 REG. GYMS

Handwritten red notes: "under park", "perfect shops", "greenhouse", "garden", "park", "entrance".

Handwritten red notes: "under park", "perfect shops".

Handwritten red note: "under park" with an arrow pointing to a parking area.

Handwritten blue note: "WHERE DO PEOPLE PARK".



TENNIS COURTS

Bus 14

ENTRY FROM 52

52

GATE WAY

AT 52

INCREASE SAFETY

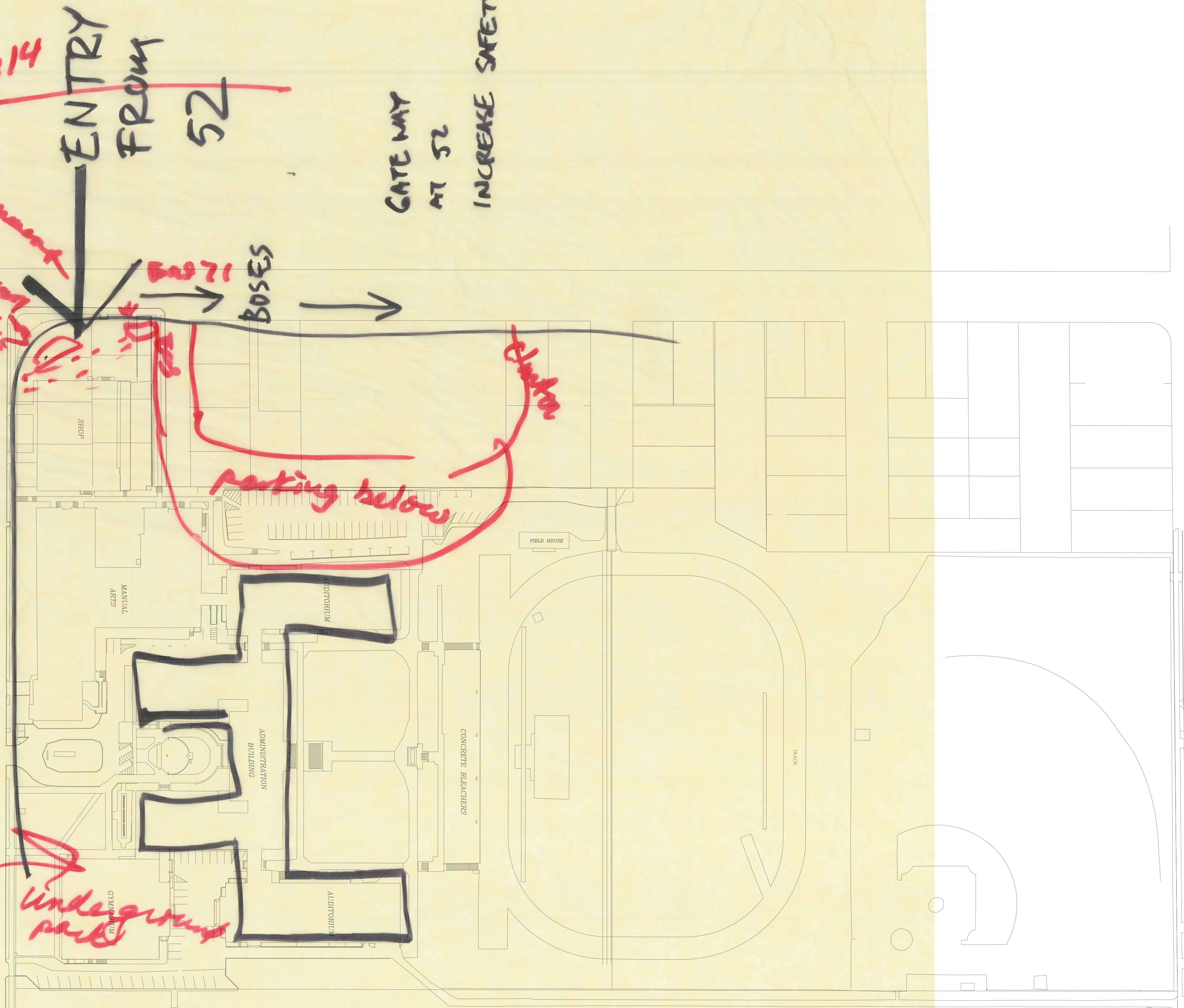
Should not have placed 52 in front of shop

Bus 71 BOSES

Parking below

new ramp

Underground parking



AT 52nd
AND WASHINGTON



Community Council
garden plots for
local non-profits
student jobs / survey

